

Shikhar

— Elevate your life —



EVERLASTING HAPPINESS HAS A NEW ABODE



Artist's Impression

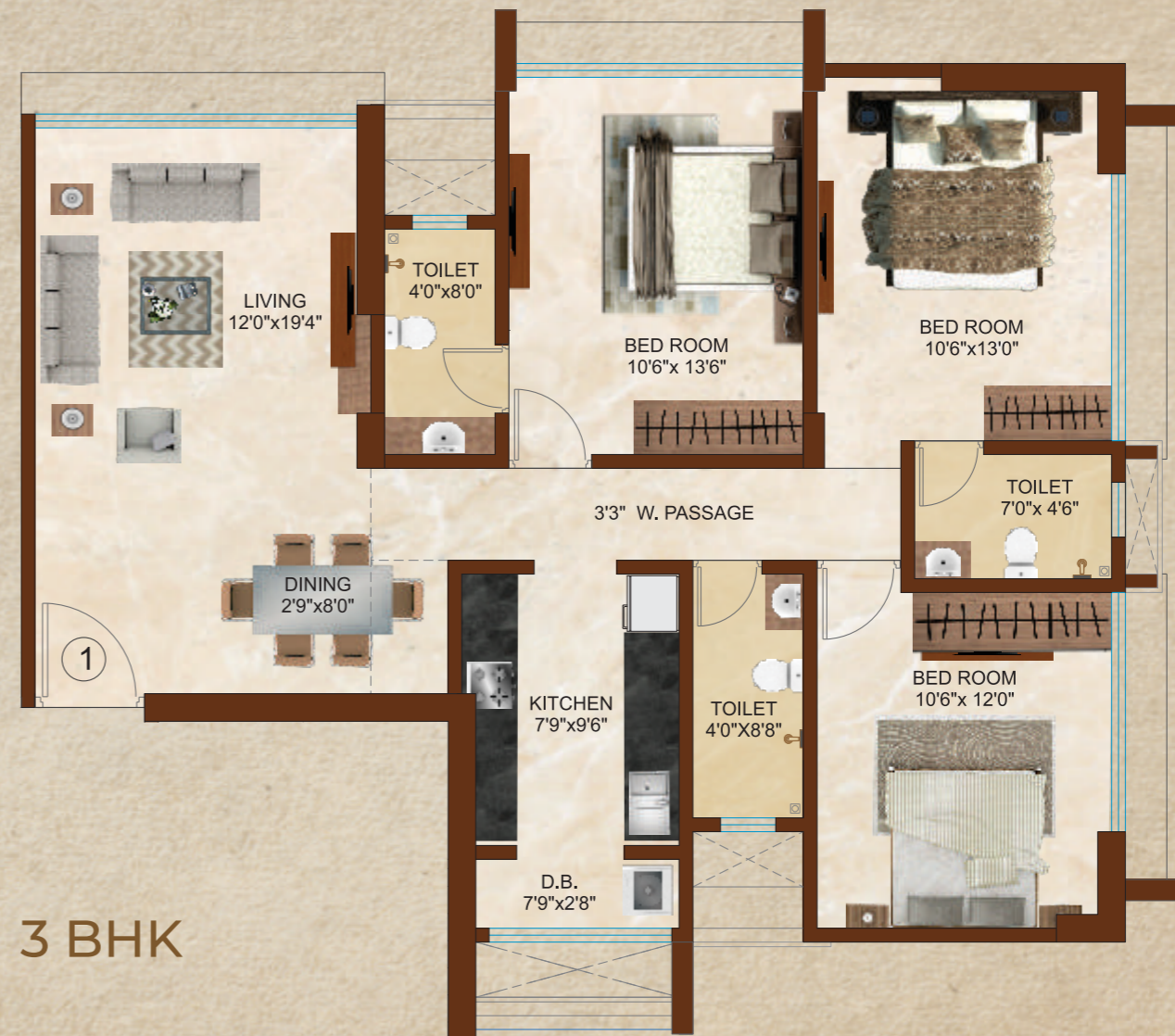
Mahavir Land Developer brings you "Shikhar" an elite Residential Tower of luxuriously spaced homes, designed to engulf you with an enchanting and welcoming aura of bliss and peace. Located in premium locality of Borivali west on Chandavarkar Road, this architectural splendour offers 4 flats of 3 BHK per floor defining well charted quadrants of quality spaces. This exclusive composition of open living spaces coupled with an array of modern amenities brings you the space of comfort which makes every moment of your life spent here worth exploring and living.



WING	FLAT NO.	RERA C. A.
A & B	2	949 SQ.FT.



WING	FLAT NO.	RERA C. A.
A & B	1	968 SQ.FT.





Artist's Impression



Artist's Impression

AMENITIES FOR HAPPIER EVERYDAY

- Grand Double Height Entrance Lobby
- Elevators of Reputed make
- Intercom with video door phone
- CCTV surveillance for common area
- Three Podium level parking with Ramp facility

Amenity floor with:

- Floral Garden
- Well equipped Gymnasium
- Walking track
- Kids play area
- Sit outs
- Elder's Seating Area

Internal Amenities

- Vitrified Flooring in entire flat.
- Coloured glazed wall tiles in Bathroom with anti-skid ceramic tile flooring.
- Kitchen with granite platform and S.S.Sink.
- Anodized aluminum sliding windows.
- Branded sanitary ware and fixtures.
- Reputed brand modular switches and fixtures.
- Concealed copper electrical wiring with adequate A.C., T.V and Telephone points.

Recreation area above Third Level Podium



Artist's Impression

Three Level Podium Parking with Ramp



Artist's Impression

SITE: SHIKHAR
 (SHREE RAGHUVANSHI CHS LTD.),
 CHANDAVARKAR ROAD, BORIVALI (W)

A Project by:



MAHAVIR
 LAND DEVELOPER
 RAKESH SHAH REALTY

B / 210, WESTERN EDGE II, BEHIND METRO, OFF. W. E. HIGHWAY, BORIVALI (EAST), MUMBAI 400 066.

T: 022 4604 5820 M: 80800 55222 / 99605 04511

E: mahavir.landdevelopers@gmail.com W: www.mahavirlanddeveloper.com

PROJECT ARCHITECT
TEEARCH

CONSULTING ARCHITECT
P R CONSULTANTS

STRUCTURAL CONSULTANT
SATISH JAIN CONSULTING ENGINEERS PVT. LTD.



MahaRera Regn. No: **P51800051096** Available on the website <https://maharera.mahaonline.gov.in>

Disclaimer: The layout plan, the number/orientation of buildings/towers/wings/structures, the common areas, facilities and amenities, the fixtures, fittings, soft furnishing / furniture, gadgets, technology, information, pictures, images and visuals, drawings, specifications, sketches and other details herein are merely a creative imagination and an Architect's impression and are only indicative. The plans, designs, and dimensions are as per current sanctioned plans and approvals. Specifications, amenities, and facilities will be as set out in the agreement for sale as uploaded on the RERA website (<https://maharera.mahaonline.gov.in>) under Registration No. P51800051096. The same may be subject to modification /change/revision/alteration in terms of approvals, orders, directions and/or regulations of the concerned / relevant authorities, and/or for compliance with laws/regulations in force from time to time and/or in line with our customer policies. We may modify/alter the above by following due procedure as prescribed under the Real Estate (Regulation and Development) Act, 2017, ("RERA") read with the provisions of the Maharashtra Real Estate (Regulation and Development) (Registration of real estate projects, Registration of real estate agents, rates of interest and disclosures on website) Rules, 2017 and the Rules and Regulations framed under RERA for Maharashtra ("RERA Rules"). Further, dimensions mentioned on the floor plans are as per the plans approved by the MCGM and the same are subject to construction exigencies. Minor Variations (+/-3%) in actual carpet areas may occur as a result of finishing tolerances & column projections.